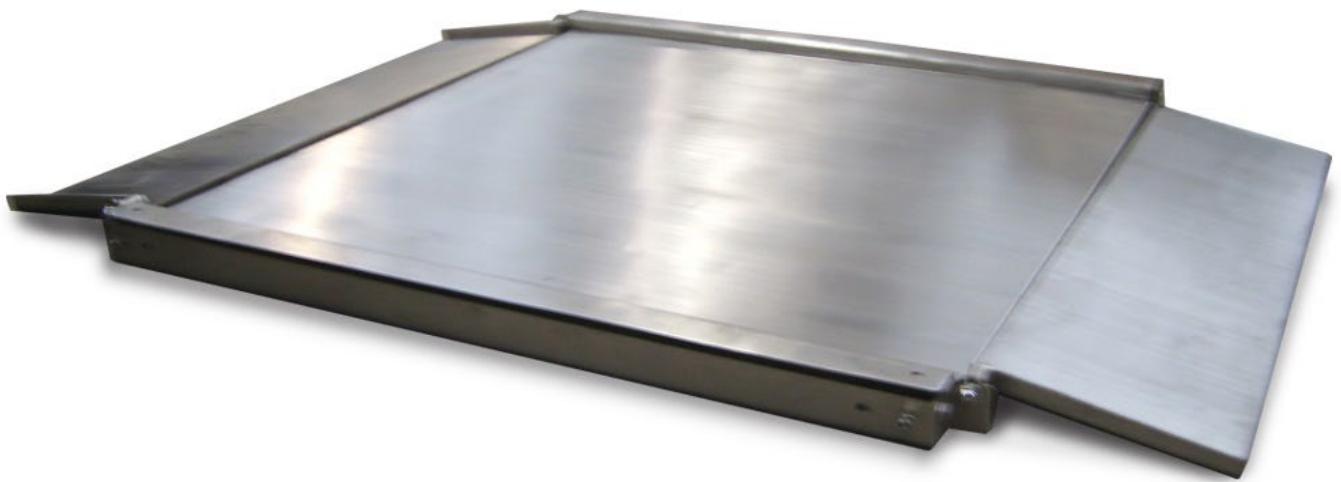


# MARSDEN

## M-920 Stainless Steel Bed Weigher

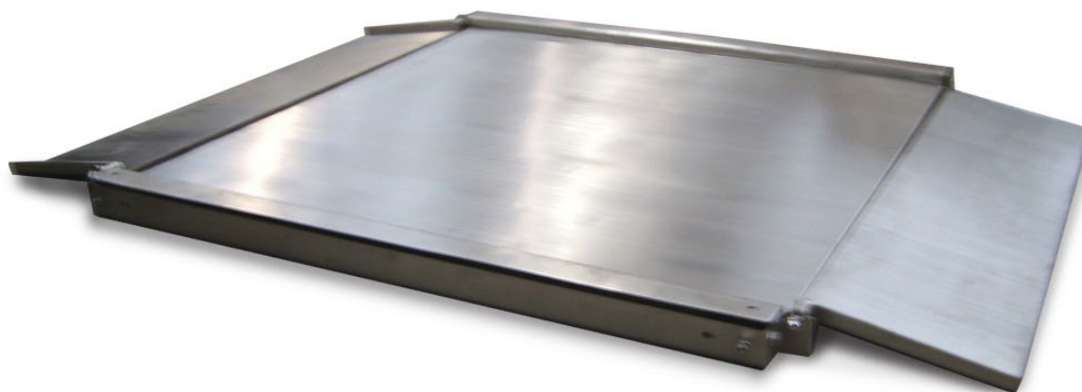


- Class III Approved
- Accurate from 200g
- Stainless steel weighing platform
- Suitable for weighing beds in hospitals
- Low profile ramps for patient comfort
- Optional Wi-Fi or Bluetooth available

# Marsden M-920:

## Stainless Steel Bed and Trolley Weigher

- Class III Approved
- Accurate from 200g
- Perfect for weighing beds and trolleys in hospitals
- Powered by rechargeable battery pack
- 55 hours of continuous use
- Auto power-off function helps to save battery power
- Stainless steel construction, giving protection against liquid
- Low profile ramps to ensure ease when pushing a bed
- Easy to read display
- Hold and Tare functions to enable accurate and easy weighing
- Optional Bluetooth and Wi-Fi available
- Covered by the Marsden 8 year warranty



### Why the M-920?

The M-920 is a stainless steel weighing platform with IP68-rated waterproof loadcells, making the scale ideal for regular washing down.

This low profile bed and trolley scale is most commonly used for weighing patients on admission to hospital, particularly those that are confined to a bed or trolley. Made easier by the foldable ramps.

### Optional connectivity options

The M-920 is available with either Bluetooth or Wi-Fi connectivity to ensure that our customers are able to transfer data seamlessly or input into EPR systems.

We would simply need to insert a connectivity module at the time of order and then provide you with our standard protocols for easy and simple integration into your existing system.

### Easy to use

The M-920 features from our best-selling DP-3810 indicator. This device features from a full numeric keypad for easy BMI calculation and simple function keys.

The On/Off button ensures that you have full control over the device and you can prolong the battery life. Hold enables you to gain readings for unsteady patients and Tare allows you to deduct unwanted weight.

<b>Capacity:</b>	600kg or 1500kg	<b>Power Supply:</b>	Mains/Rechargeable
<b>Graduations:</b>	200g or 500g	<b>Battery Life:</b>	55 hours of continuous use
<b>Functions:</b>	Hold, Tare, BMI	<b>Approvals:</b>	Class III Approved
<b>Dimensions:</b>	1200mm x 1200mm / 1500mm x 1500mm	<b>Warranty Period:</b>	8 Years