

MARSDEN

A Guide to Trade Approved
Scales for Breweries





Why should breweries use Trade Approved scales?

Where the price of something is determined by its weight, a Trade Approved scale must be used. Using unsuitable scale can result in a £1000 fine - yet many breweries may not be aware of this.

The Non-automatic Weighing Instruments (NAWI) Directive 2014/31/EU states that 'determination of mass for commercial transactions' and 'for the purposes of direct sales to the public and the making up of pre-packages' requires a Trade Approved weighing scale.

Weighing scales are used throughout the brewery processes - from weighing ingredients, to outgoing casks, bags of malt, through to the shipping out of consignment. It's important then that the scales used are suitable - and that includes meeting legal requirements.

In this guide, we cover the typical uses of Trade Approved scales in a brewery environment, and recommended Trade Approved scales for such uses.


“ I primarily use the scale for weighing filled cans during packaging runs, along with general weighing duties ”

*Dog Falls Brewing Co
(uses a Marsden B-400)*

What are Trade Approved scales?

It is a legal requirement that Trade Approved weighing equipment is used when goods are bought or sold based on their weight.

Trade Approved scales are also referred to as Class III Approved scales, Legal for Trade scales and stamped scales. The legislation protects the customer and rigorous testing ensures these scales are built, tested and verified to a certain standard. Two different approved scales weighing the same item should give the same weight reading.

Legal for trade scales can be identified by their data plate, found on the bottom or side of the scale. This should feature  in a circle (indicating it is Trade Approved).

Class III Approval is also shown on the DOC certificate, which is provided with the scale. This document also shows the manufacturer's name and scale capabilities.

Marsden recommends that all relevant documents - such as calibration certificates and Declaration of Conformity - are kept safe in case they are needed during inspections.

Do Trading Standards check weighing scales?

If your brewery is visited by a Trading Standards officer, they will check your weighing scales to ensure they are suitable for their intended use. They will pay particular attention to applications where a Trade Approved weighing scale is required, inspecting the scale to ensure it complies with the law, and that it is in good working order, weighing accurately.

Craig Fisher, Trading Standards Officer at Sheffield Trading Standards, says:

"Any checks that are carried out in breweries to ensure the volume being sold is accurate, must be done using Trade Approved equipment. The weighing of ingredients to be added to the recipe however is not controlled weighing (i.e. the scale here does not need to be Trade Approved).

"In general, Trading Standards Officers will try to carry out a multi-disciplined inspection including Food Standards

and Metrology. Lower capacity weighing machines will be tested, but higher capacity machines may require a separate visit.

"Inspectors will check the scales to ensure they have the correct markings if they are deemed to be used for trade. They should have been manufactured in accordance with appropriate type approval or examination certificate and be passed as fit for use for trade by an Inspector of Weights and Measures or an approved verifier. They may also be qualified by an approved manufacturer or notified body.

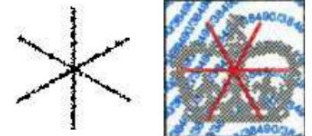
"As well as the manufacturer's details, the 'M' mark, accuracy class, capacity, scale interval and minimum load, inspectors will assess whether the scale is suitable for its intended purpose and is sufficiently accurate depending upon the packages they are checking. They should also be situated in a suitable environment."



What if unsuitable weighing scales are used?

Weighing equipment may be 'rejected' if it is found to be inaccurate or not compliant with manufacturing requirements on inspection. Scales could also be rejected if they have not been correctly calibrated or repaired.

A stamp with a six-point star (right) is applied to the scale if it has been rejected by Trading Standards. It is an offence to use weighing equipment which bears a six-point star for legal purposes.



If you are considering purchasing second hand scales, it is important to check for this symbol as it will mean that the scale has been rejected in the past. It is an offence to use a weighing scale for legal purposes if it carries the six point star.

Punishments for using unsuitable weighing equipment for a Trade Approved purpose vary, with worst-case scenario being imprisonment.

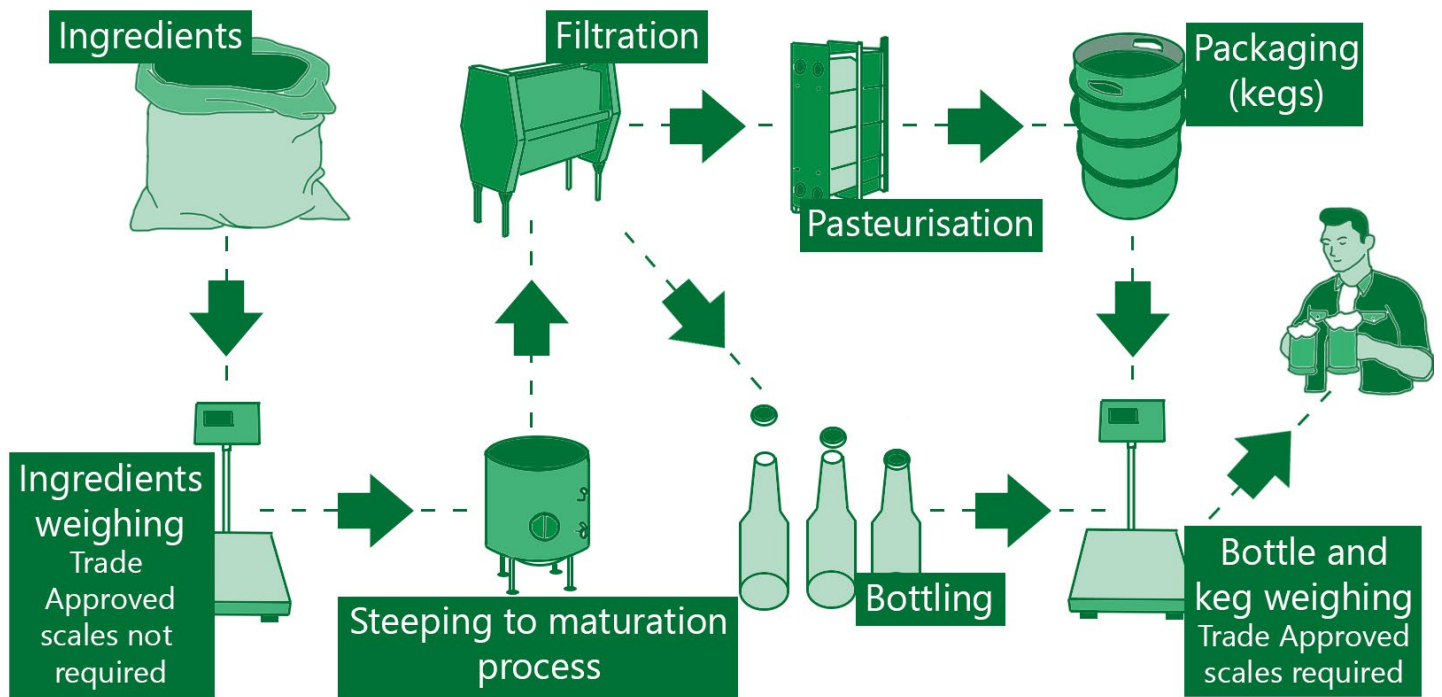
Craig Fisher says: "The fines can be level 3 (over £1000) for matters in relation to inappropriate use. But for all other matters it would be an unlimited fine. If it is fraud in relation to the use of Weights and Measure equipment, it can mean an unlimited fine and up to 6 months imprisonment.

"Magistrates will take into consideration many factors, such as the level of detriment caused, harm to vulnerable people, previous history and more."

“

We use our scales for various aspects of brewing and have found that we have a very consistent product ”

*Acorn Brewery
(uses a Marsden HSS-I-100SS)*



Applications for Trade Approved scales

Bottling

Breweries need to use Trade Approved scales when bottling, if the volume is shown on the bottle, and the price is based on the volume; or when despatching, upon the packages they are checking.

Keg Filling

Trade Approved weighing scales will need to be used when keg filling, before despatch to your customer. Many breweries rely on flood filling their barrels or kegs, however this 'would not form an adequate defence to any allegation of short measure', according to Craig Fisher.

“

We use our Trade Approved Marsden scale for checking the weight of our min kegs. This is always checked during Trading Standards and SALSA.

”

*Little Critters Brewery
(uses a Marsden MSS-I-100-APP)*

Marsden B-400 Stainless Steel, Splashproof Bench Scale



For: Bottling

Capacities: 6kg, 15kg, 30kg

This Trade Approved stainless steel bench scale is **IP67-certified**. This means it can cope with harsh environments where it is likely to get wet, just like a brewery.

The weighing pan is **252mm x 200mm**, making it ideal for smaller breweries and for weighing upto, roughly, 10-12 bottles or cans at a time.

“

We'd tell anyone considering purchasing a scale from Marsden that these have lived up to our expectations ”

*Wild Beer Co
(uses two Jadever AGT-Cs)*

Marsden MSS-I-100-APP Affordable Scale with Base Size Options



For: Bottling and Keg Weighing

Capacities: 3kg, 6kg, 15kg, 30kg, 60kg, 150kg

Base options: 300mm x 300mm, 400mm x 400mm, 600mm x 600mm

The MSS-I-100-APP is the entry-level option for breweries. It doesn't have the ingress protection of the other scales we have included here, nor does it have options for automating filling tasks or recording weights like the HSS-JIK-APP (overleaf) - but it does offer a number of different base sizes and capacities and it is very simple to use.

As with all other scales here, it has the Tare function to remove the weight of a crate or pallet, and with an entry-level price it does mean less investment in weighing equipment is required by your brewery.

Marsden HSS-I-100SS-APP Stainless Steel, Splashproof Scale with Larger Base Options



For: Bottling and Keg Weighing

Capacities: 3kg, 6kg, 15kg, 30kg, 60kg, 150kg

Base options: 300mm x 300mm, 400mm x 400mm, 400mm x 500mm, 500mm x 600mm, 600mm x 600mm

Weigh bottles in greater quantities, or a single keg/mini kegs. The **400mm x 400mm base** option should be ideal for a single keg, depending on the size you use, but larger bases are available.

The base of this stainless steel scale is **IP67-certified** - perfect for damp and wet brewery environments - with encapsulated loadcells for greater protection.

If you are weighing crates of bottles, you can use the Tare function to remove the weight of the crate.

Marsden HSS-JIK-APP Stainless Steel, Splashproof Scale for Liquid Filling/Recording Weight



For: Bottling and Keg Filling

Capacities: 3kg, 6kg, 15kg, 30kg, 60kg, 150kg

Base options: 300mm x 300mm, 400mm x 400mm, 400mm x 500mm, 500mm x 600mm, 600mm x 600mm

The HSS-JIK-APP has several added benefits over the HSS-I-100SS-APP. It has the same capacity, accuracy and base size options, making it ideal for both bottle and key weighing, but additionally you can use it for:

Liquid filling tasks: In many circumstances, breweries add the keg to the scale, and then begin filling it, and stop filling it when it reaches the target weight. However, liquid filling can cause some scales' weight display to 'jump' rather than show a constant, consistent weight reading as the keg fills.

The HSS-JIK-APP is designed for accurate weighing during liquid filling tasks, such as keg filling, meaning you're much less likely to go too much over your target weight. If you don't think you need the IP rating, choose the lower-priced mild steel version, the MSS-JIK-APP.

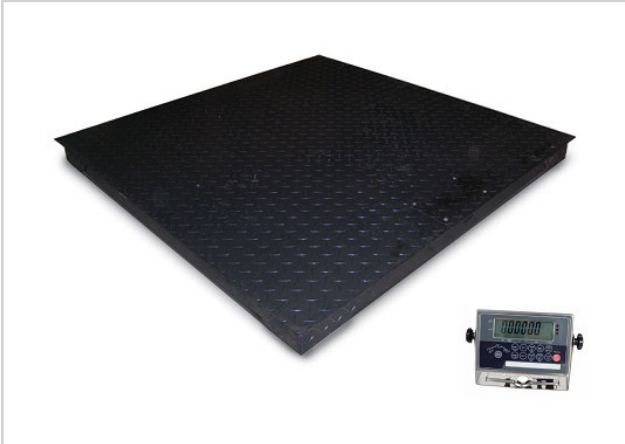
Automating filling tasks

With an optional relay board, the HSS-JIK-APP can be used to control other devices. This means, by setting a target weight on the scale, you can switch off the feed when that target weight has been hit. This means more accurate results - and less human time and effort.

Recording weighing tasks

Optional printers and USB cables mean you can create a record of everything you weigh on the scale. Use the USB cable and each time you weigh an item or items, the weight, including date and time, will be added to the spreadsheet. Connect the printer and weight, date and time will be printed on a sticky label, ideal for adding to paper records or attaching to a shipment.

Marsden P-JIK-APP Mild Steel Scale for Bulk Weighing



For: Keg Filling/Checking

Capacities: 600kg, 1500kg, 3000kg

Base options: 750mm x 750mm, 800mm x 800mm, 1000mm x 1000mm, 1000mm x 1200mm, 1200mm x 1200mm, 1200mm x 1500mm, 1500mm x 1500mm

For larger breweries, or simply when you want to weigh multiple kegs in one go - usually prior to shipping - a platform scale is your typical solution.

A standard **1200mm x 1200mm** base is designed specifically for weighing palletised goods, and Tare will mean you can remove the weight of the pallet so that you simply have the weight of your kegs. This particular platform is perfect for liquid filling.

Marsden DT-SS-I-100SS-APP Stainless Steel, Waterproof Drive Thru Scale for Bulk Weighing



For: Keg Checking

Capacities: 600kg, 1500kg

Base options: 1200mm x 1200mm, 1200mm x 1500mm, 1500mm x 1500mm

An alternative to a platform scale, this drive thru scale means you can bulk-weigh without needing a forklift: the ramps of this scale mean can simply manoeuvre a pallet, using a pallet truck, onto the scale.

Three base size options and Tare make this scale highly useful for checking the weight of multiple kegs in one go - plus, the base is **IP68 waterproof**.

Marsden PB-1200-JIK-APP Affordable, Portable Beam Scale



For: Keg Filling/Checking

Capacities: 600kg, 1500kg

Alternatively, if you need a larger scale but lack the space, use weigh beams. These can be stored away when not in use but can be used to weigh a single keg, or palletised kegs easily.

Both beams have handles and wheels for easy movement. The JIK indicator, available with all our platforms, drive thru and weigh beam scales, is perfect for liquid filling processes.

MARSDEN

Tel: 01709 364296 / 0800 169 2775

Fax: 01709 364293

E-mail: sales@marsdengroup.co.uk

www.marsden-weighing.co.uk

 MarsdenWeighing

 @MarsdenWeighing

 www.youtube.com/MarsdenWeighing

 <http://pinterest.com/marsdenweighing>